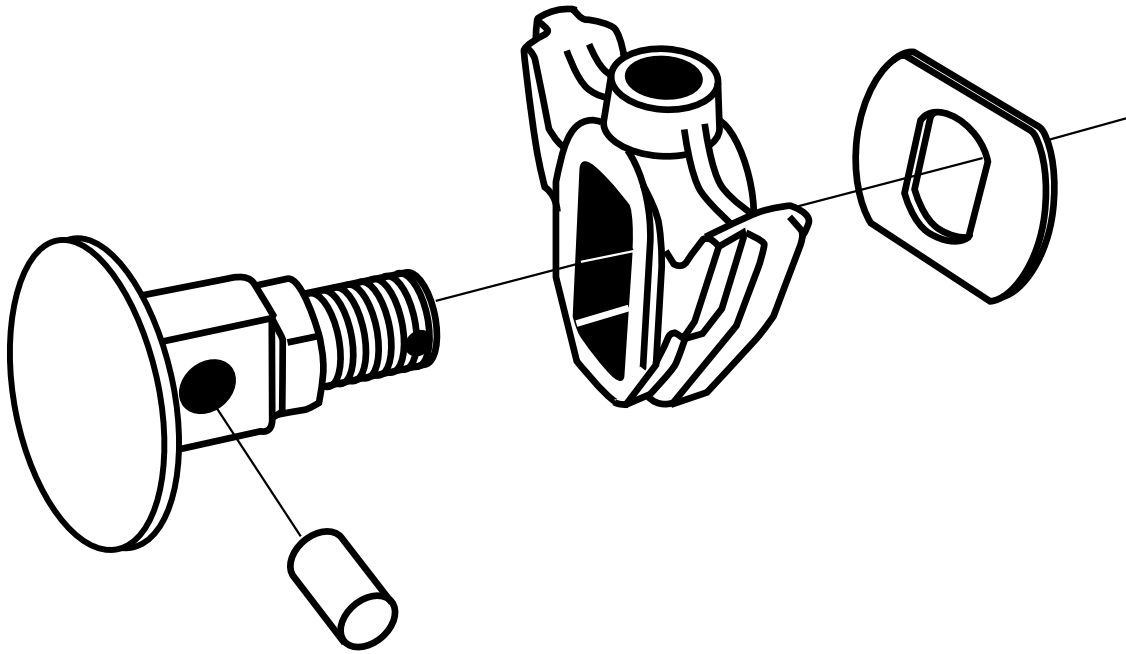


A-2051-F BRAKE FLOATER KIT



1. Remove existing wedge stud and adjustment wedge.
2. Insert round pin from floater kit into round hole on new wedge stud from kit.
3. Apply a small amount of grease/white lube to the pin and surrounding area of stud.
4. Slide adjustment wedge over stud shaft until pin is centered with-in the wedge.
5. Install washer onto wedge stud and re-install wedge/stud onto backing plate, securing with castle nut and cotter pin.
6. Check that wedge will move freely up and down and side to side on the stud.